

Bougainville Copper Concentrates

VOLUME TWO / NUMBER SEVENTEEN SEPTEMBER, 1972



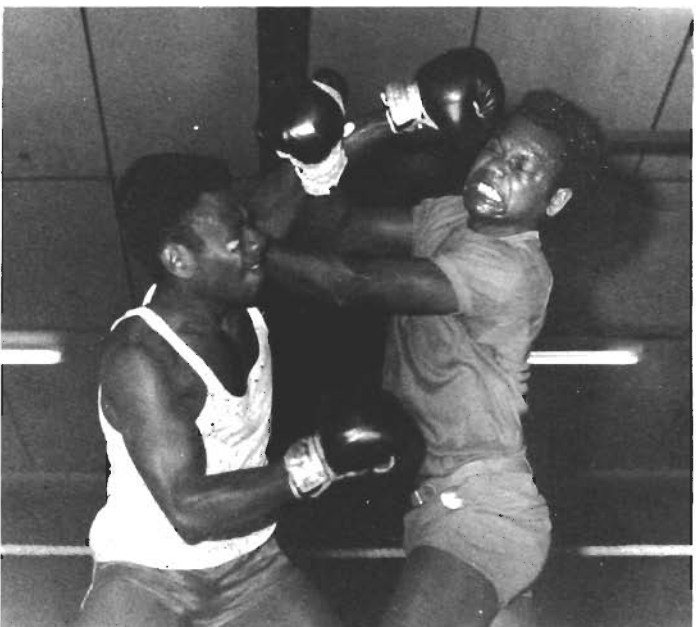
Aussie Rules Finals

The Aussie Rules final was a great success. Story and photo's, next page.

Mining Workers Agreement

The Mining Workers' Agreement was signed on August 17. Inside, the full story.





Sports news

The AUSTRALIAN RULES Competition is finished for 1972 and Mining, who were favourites, won. Not without some real scares, however. Final scores were Mining 8.17 Concentrator 7.7.

Mining found it very hard to score goals early in the game and had 6 behinds on the board before they could find the big sticks. Play throughout was fast with Mining more purposable in their approach. Concentrator did not attempt to find a team mate when attacking and throughout the game the kicking was ill directed. They also fell down in sheperding which let in the Mining players many times.

Concentrator came right back in the third quarter and things didn't look too rosy for Mining. However coach John Cummins settled them down again and they were able to hold the Concentrator team fairly easily.

For the winners I thought No.14 Roge was the best man on the ground. He was ably helped by No. 8 Laa their captain who incidentally won the best and fairest trophy. Robert Phillips and Henry Kavanatur were prominent throughout the match. For the losers I thought No.14 Macrides was best with Frened Ane in the play throughout the match. Here's hoping for a better season next year as I am sure Australian Rules is here to stay.

BASKET BALL

Two teams from Loloho visited Panguna on August 23 and although both were beaten (one by 3 points only) they went down fighting. Returning matches have been organised for September 6. This is good news as basket ball has been in the doldrums of late and it's good to see Camp 6 in competitions. Leith Anderson is coach for Camp 6 as well as being our No.1 referee.

Two teams from Panguna have entered the Kieta competition which will be conducted each Sunday. A Total of 12 teams are in this competition.

DARTS

Commonwealth Bank defeated Brewery in the Kieta Darts Competition. This was a thrilling match and any ones game up to the last. The end of the final depended on a double to finish - Comm. Bank getting this vital point first. Our Loloho team, No. 1, after being with the leaders all the competition, were put out in the semi final and this game ended similar to the final.

BOXING

Excellent nights were held at Panguna on August 18 and again at Loloho on August 25. Before the New Britain titles it is hoped to bring some fighters from Rabaul over for a few bouts against our boys. I have seen Alan Richardson, who is one of the organisers of Rabaul Boxing, and he agrees this is a good idea and not hard to organise.

At Panguna I think the best fight of the evening was between Phil Sapak and Donald who won the 1972 Welter weight title for PNG. Donald hasn't had a fight since the titles and Phil, who is in top form, was able to out point Donald. Jack Luff from Panguna and Gabriel from Loloho also turned on another good fight .

At Loloho after many good bouts the night ended with a blind fight between Arnold from Arawa Supermarket and one of his "wontoks". This ended another great night of boxing.

Next night will be at Panguna on September 8 - National Day weekend.

GOLF

John McGee (BCP) won the first club championships at the Aropa River Golf Club recently. John was hot favourite to win. It's good to see quite a few BCP faces at the course which, by the way, is improving all the time. Sunday is always a good day with refreshments and barbeque available after your game.

There are still vacancies for the charter to Rabaul at the end of the month. Ring me (5-272) if you want to go.

Anyone interested in BASEBALL or SOFTBALL and would like to form teams for a competition, please contact myself or Morrie Sullivan (297).

The RUGBY final four has now been settled. On August 27 there were three replays before the four could be settled. The ladder is; Tura 22, Hiri 'A' 21, Kumul 20, Brothers 16, Marshall Lagoon 'A' 14, Toniva 11, Hiri 'B' 9 and Marshall Lagoon 'B' 1.

As you can see it has been an exciting season with an outstanding late run by Brothers. Congrats to all for this exciting first season. The finals will be held as follows. 1st semi - Sept. 3, Kumul v Brothers, 2nd semi - Sept. 10 Tura v Hiri 'A', preliminary final Sept. 17 winner of 1st semi v loser of second semi. Grand final Sept. 24 winner of second semi v winner of preliminary final.

Discussing the 1972/73 CRICKET programme with John Beachamp this week and it appears that there will be four teams in this years competition - two from Panguna one from Arawa and one from Kieta. The season starts the first week in October and all teams are busy practising. A meeting will be convened shortly to lay down the format for the season. It is hoped that Rabaul will send a team over early November as a warm-up to the territory championships that take place New Year weekend. We should have a team in both the 'A' and 'B' divisions of the championships.

Play this season takes place at Rigu grounds - the pitch covered by kippax matting. If the Panguna ground is ready (it is to have a correct drainage system installed), an aluminium wicket will be used covered by coir matting. Interested players may contact John Beachamp (5-320) for Panguna or Kevin Barden (5-333) for Arawa.

SOCCER

The 22 players who dragged themselves out of an eight-inch-deep quagmire looked as though they came from the Eton wall game instead of the soccer field at Panguna on August 27. Singles were playing marrieds. The singles overcame the poor conditions early and were soon two goals ahead by Hurrell. The second half was all Singles with Marrieds floundering helplessly in the face of strong forward attacks by Berry, Hurrell, Beachamp and Sweeney. Marrieds only attempted two shots at goal in this half. The second shot was a scorcher by Benson; trouble was it was his own goal. If it hadn't been for Mitchel, the score would have been the RFL type.

Marrieds are having a collection. Proceeds to be used to send the ref to the visiting optician. Final scores Singles 6 marrieds 0. The barbeque afterwards was marvellous and many thanks to the Cricket Club for hosting.

PETER GRISWOLD

PANGUNA SQUASH CLUB

On August 19 our Club Championships were held. In a hard, fast and entertaining match the A grade final was won by Ian Wright with Konrad Tragauer runner-up. In other matches: Geoff Barnes defeated Keith Sweeney. (Plate) Peter Wednight defeated Peter

Barter (A reserve) Mrs Barnes defeated Mrs Blackwell (womens).

Congratulations to the Barnes family on taking off two finals, the plate and the womens. At the conclusion of the Championships a very enjoyable barbeque was held next to the squash courts. A new supply of rackets and sand shoes has just arrived. They are available at the squash club at reasonable prices.

BILL JOHNSON

Opposite page, scenes from the Panguna boxing. Below, the Aussie Rules final and, bottom, Turas v Hiri "B" at Toniva.





The new aggregate crushing plant near Camp 7 has been finished. It produces $1\frac{1}{2}$ inch diameter rock for the haul roads to reduce wear and tear on 105 truck wheels. It also produces concrete aggregate, sand and gravel.

PANGUNA

Sat. & Mon. Sept. 9 & 11	Hannibal Brooks	Films
Sun. & Tues. Sept. 10 & 12	Dr in Trouble	
Thurs. & Fri. Sept. 14 & 15	Please Sir	John Alderton Deryck Guyler
Sat. & Mon. Sept. 16 & 18	Too Late the Hero	
Sun. & Tues. Sept 17 & 19	1000 Plane Raid	
Thurs. & Fri. Sept. 21 & 22	Heaven Knows Mr Allison	Deborah Kerr Robert Mitchum
<u>ARAWA</u>		
Wednesday September 13th	Change of Habit	Elvis Presley Mary Tyler Moore
Friday September 15th	Celebration at Big Sur	Joan Baetz and Mod Groups
Sunday September 17th	Whats New Pussy Cat	Peter Sellers
Wednesday September 20th	10 Little Indians	Shirley Eaton Hugh O'Brien
Friday September 22nd	Hannibal Brooks	
Sunday September 24th	Dr in Trouble	Leslie Phillips

Note: Films are subject to change due to the possibility of their non arrival onsite. I regret that I am unable to give full information on some of the future films due to the non arrival of press sheets etc.

APPRENTICE NEWS

Our apprentice of the year Augustine Damat will be travelling to Australia on September 10 for a month. Augustine will visit Sydney, Melbourne, Burnie, Canberra, Adelaide, Broken Hill and Mt. Isa. During his stay in Melbourne arrangements have been made for attendance at the Australian Rules Grand Final and the Royal Melbourne Show.

The trip, part of his prize for being selected as P.N.G. Apprentice of the Year, is not all sightseeing however. Many industries will be visited and upon his return a comprehensive report is expected covering both the technical and social aspects of the journey.

Recently 32 BCP apprentices underwent a series of trade tests to establish whether they could be called tradesmen earlier than first stated. This has been satisfied and congratulations to the following tradesmen is extended: A. Damat, R. Avero, C. Avabu, G. Bruno, B. Toniam, C. Tetana, E. Imurudi, J. Marava, S. Fiware, M. Gogot, W. Taivare, S. Sarea, W. Urang, A. Vuvu, A. Wani, R. Raurela, A. Wainasu, T. Kalipa, P. Pokombu, K. Feka, A. Hinnahson, A. Graiba, B. Kosi, J. Kelwau, B. Brench, V. Lare, I. Sanduma, A. Lolo, R. Kalabus, C. Saleu, V. Giobun, B. Ikalom. They now move into the journey-man stage of their careers. A presentation dinner will be held in Camp 2 on September 9 where they will receive their BCP proficiency certificates.

MINE TRAINING NEWS

The Training Department held a staff get-together barbeque and film evening on August 26. Noel McDuffie handled the serious business of turning on the keg tap very ably.

John Cameron should be moving back into his house after two months temporary accommodation due to a fire which caused damage to the rear of his house.

The Arawa Hospital has been busy lately in attending to training staff, glad to see Noel Humphries and Noel McDuffie back on their feet again, unfortunately John Moyer has had to return again with a bad leg.

Enos Tewe and Elias Kunak have just returned to site after completing their fourth and final block course and have graduated as Technicians and holders of Mechanical Engineering Certificates.

Lembias Magasu, a company sponsored student, graduated in Science and received his Degree at a ceremony at the PNG University on August 21. Lembias has been offered employment with the company.

Sport has always been a high priority with Training Dept. staff. Ron Bowden was recently successful in the Arawa Tennis competition and has since been elected President of the Arawa Tennis Club. Mrs Beverly Barnes shone recently in the ladies section of the Squash Tournament at Panguna, winning quite comfortably.

Reported that Max Ziems of fishing fame and Michael Agial caught some big ones recently and Max ventured out into deep waters in his newly acquired skiff.



Scene from the recent Kieta Primary Schools Sports

people

Bottom, John Ashby, geologist, at work on the computer. Below, Bill Taian, surveyor. Right, assistant general manager of the Commonwealth Trading Bank of Australia Ltd., Mr C.R. Wilshire, reads Concentrates with BCP Managing Director, Ray Ballmer. Right centre, Malcolm Gordon, senior storeman. Bottom, Stan Chalmers, Public Works engineer, and his wife, Alma, at a recent Country Club function.



The Project

— 1968

No.1: Barapina Enterprises may be interested to see how it looked in '68. That's BCP headquarters right in the centre - or most of it; the drafting office and geologists were over in Pan Flat, as were Dillingham Corporation who did the adits. The first trade store is also pictured - on the site of the present branch of the Commonwealth Bank.

No.2: Quite an idyllic spot - Arawa Plantation and homestead area before any development began. As well as running a large plantation, the owner, Kip McKillop, tended a world famous orchid collection. When the development of the town area began, we believe Kip returned to Australia, and at one stage became interested in purchasing another plantation - this time in South America.

No. 3: Not quite an international berth, but it was the only place to land supplies from southern ports back in '68. The Karlander Line ran a regular cargo service between Australia/B.S.I.P./ and Papua New Guinea - much easier to sneak in under bond goods in those days. Pictured, the M.V. 'Sarang'.

No. 4: The Nodwell really suited the rugged terrain and was used extensively to transport drill equipment and supplies - this drill site was where the C.C.S. office now stands. The 2 Nodwells of Canadian manufacture, eventually blew up, but one was rebuilt in '69 and was operational again for some time.

No.5: A familiar sight? Not cyclone Ida of 1972, but a regular occurrence on the original Kieta/Panguna access track - a land slip. An expert in clearing them, Mr Bill Pullin, on the left, walking towards the scene. This slip took place just above the industrial area - if Hastings Deering had been there it may have saved a bit of manual labour.

No. 6: Even in those days we had the odd VIP visit. Pictured here are Don Vernon, then Project Manager, Mr Espie, Managing Director B.C.P., "Johnno" Johnson B.C.P.'s man underground, Mr E.T. Biggs, Manager International Division for CRA and Mr N.W. Shudo, RTZ's representative in Tokyo. The picture was taken near the entrance to the Panguna adit.

SIMON FEELY

4





Th

No. 1:
inter
That's
centre
office
Pan F
who di
store
of the
Bank.

No. 2:
Planta
any de
running
owner
famous
develo
we bel
and a
time

No. 3:
suppl
cargo
to sne

No. 4:
to tra
C.C.S.
blew

No. 5:
the o
them,
place
may ha

No. 6:
Vernon
Johns
Divis
pictur

Project 68

g Enterprises may be
e how it looked in '68.
quarters right in the
of it; the drafting
gists were over in
e Dillingham Corporation
s. The first trade
ctured - on the site
ranch of the Commonwealth

idyllic spot - Arawa
omestead area before
began. As well as
plantation, the
llop, tended a world
llection. When the
he town area began,
returned to Australia,

became interested in purchasing another plantation - this
merica.

an international berth, but it was the only place to land
uthern ports back in '68. The Karlander Line ran a regular
ween Australia/B.S.I.P./ and Papua New Guinea - much easier
r bond goods in those days. Pictured, the M.V. 'Sarang'.

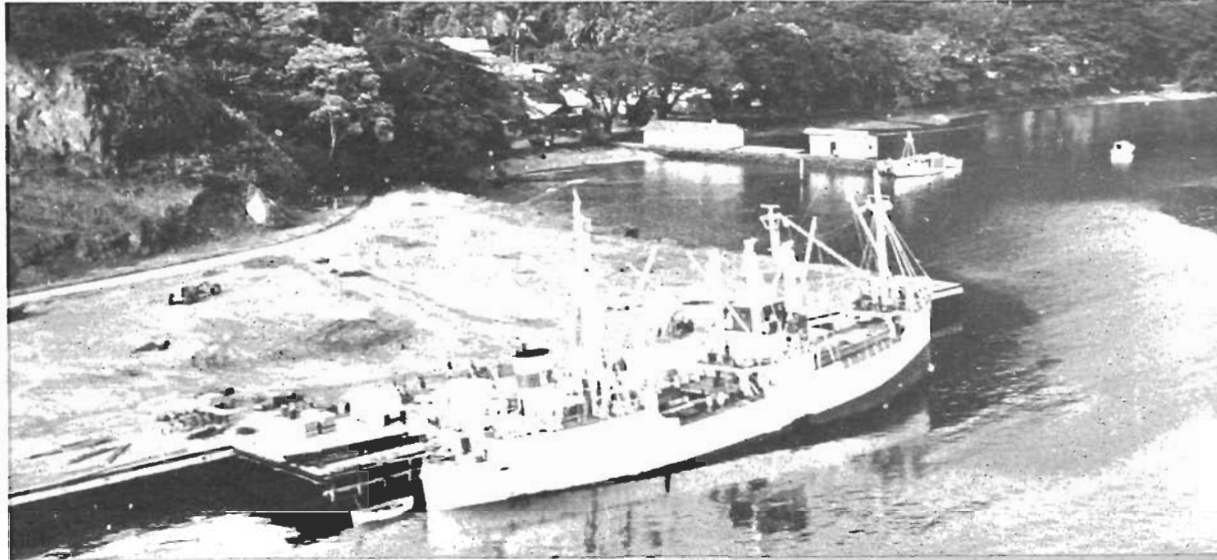
ell really suited the rugged terrain and was used extensively
ll equipment and supplies - this drill site was where the
w stands. The 2 Nodwells of Canadian manufacture, eventually
was rebuilt in '69 and was operational again for some time.

r sight? Not cyclone Ida of 1972, but a regular occurrence on
ta/Panguna access track - a land slip. An expert in clearing
llin, on the left, walking towards the scene. This slip took
the industrial area - if Hastings Deering had been there it
bit of manual labour.

those days we had the odd VIP visit. Pictured here are Don
ject Manager, Mr Espie, Managing Director B.C.P., "Johnno"
man underground, Mr E.T. Biggs, Manager International
and Mr N.W. Shudo, RTZ's representative in Tokyo. The
n near the entrance to the Panguna adit.

SIMON FEELY

4



5



6



Mining Workers Agreement

A two year Bougainville Mining Workers' Agreement was signed on August 17 between Bougainville Copper Pty. Limited and the Bougainville Mining Workers' Union. The agreement is effective from July 1 and will remain in force until June 30, 1974.

Wage increases range from 5 to 7 per cent for 2,500 indigenous employees.

Many classifications in the agreement were upgraded due to increased skills being acquired by wages employees as the mine operations continues to develop, which in turn have increased substantially take-home pay, for those people affected.

For instance the tradesmens' rate increased from \$26.40 to \$30.10 per week.

An important feature of the new agreement is the increase in the old local supplement from \$1.60 to \$1.70 for groups 1 to 11 in the agreement, and for groups 12 to 17, an increase from \$1.60 to \$1.75. This supplement is now known as the all purpose supplement and forms part of the all purpose rate for wage payments on overtime, annual leave, public holidays and sick pay.

The tradesmens' tool allowance increases, paid to employees to compensate for supplying their own tools as a condition of employment, range from 35 cents upwards \$1.50 per week. This allowance also now forms part of the all purpose rate.

The sick leave clause of the old agreement was amended to provide accumulation of sick leave credits based on years of service. It further provides that on termination of employment the employee will be paid for unused sick leave credits on the basis of 50% of the value of credits outstanding, on termination of service after two years service ranging up to 100% of credits after 10 years of service.

In line with the policy of the Department for Labour and in accordance with the International Labour Organisation, standards for job classifications and job descriptions were introduced in this agreement for the first time.



Front facing, Spencer Edopa, welder, from Poppendetta; Linus Konukung, union treasurer from Bougainville; Fabian Kaona, president of the union from West New Britain. Back row left to right: Henry Lote, 105 driver from East New Britain; Sam Joses, 105 driver from Lae; Jeff Kako-Fae, concentrator operator from Gulf District. Right row: Leo Tondopan, industrial relations officer, BCP from Wabag; Severinus Ampaoi, industrial relations officer BCP from Bougainville; Henry Moses, industrial relations officer, BCP from Bougainville; K.F. Miller, industrial relations Manager, BCP. Bottom picture shows signing of the agreement.

Preliminary discussions on the new agreement commenced late in May 1972, between the Bougainville Mining Workers' Union and Bougainville Copper Pty. Limited and continued on through June, July and mid-August.

The union held a series of large meetings of its members in Panguna and Loloho to keep their members informed of their union officials progress in negotiations with the management of the company.

During the negotiations the union accepted an invitation from the ACTU to meet in Port Moresby to discuss with them the merits of their log of claims being considered by management. At the same time discussions were also held in Port Moresby with other employee organisations to make comparisons of their log of claims with existing awards in Papua New Guinea.

On November 3, 1969, an application by the Bougainville Mining Workers' Union for registration as an industrial union appeared in the Government Gazette. Early in 1970 the new union was formed some 55 people attended. Following this development the first Bougainville Mining Workers' Agreement was drawn up and signed by the company and the union.

For the next 1½ years very little industrial activity was experienced from the union on the mine site.

However, on February 23, 1972, at the annual general meeting of the union more than 550 people attended in the election of the new officers of the union for 1972. Emphasis was made concerning the renewal of the agreement later in the year.

The Bougainville Mining Workers' Union now has a paid up membership exceeding 1,000 members. This makes it about 2½ times larger than the average trade union in Papua New Guinea.



Baskets of Bougainville

Three types of village baskets from Central and South Bougainville: Top right is the popular "Buin" basket, made all over South Bougainville and to be found as far north as Torokina. Buin baskets are made these days primarily for tourist sale but many villages keep them for storing things in.

A more traditional basket (above left) is the "anto", made in the Kongara area. These baskets are much larger and simpler in shape than the Buin baskets and are used for holding large quantities of food at singsings. Because traditional singsings are decreasing in popularity and Buin baskets are a more lucrative occupation, few antos are made these days. This one comes from Longeta village near Takuan volcano and is blackened with many years' use.

Left, only to be found in Central and South Bougainville is the "tora" basket. As opposed to the Buin and anto baskets, which are made only by men, the tora basket is made only by women. It is made quite quickly from strands of palm and is used for carrying produce to market.





This is Kawerong Haus entrepreneur chef Eddy Mucha. As well as running a kitchen, Eddie runs a racing stable in Australia. At the moment he is in the UK getting married; he should be back here soon.

CONCENTRATOR NEWS

- Recently we have been endeavouring to balance the throughput of the fine crusher plant and concentrator by reducing the aperture of the screens to produce a finer feed size to the mills. The following note was left by one of the crushing foremen. "After a great deal of thought we came to the conclusion that this size of screen may help G. Gauci and Concentrator Crews in their grinding problems." Enclosed was a sample of fly-wire.
- Congratulations to Kevin Gilbert on his appointment as Crushing Supervisor. Also Bob Walker to Operating Foreman - milling, and Alan Benson to acting Maintenance Foreman - crusher.
- Ernie Stormer is now reaping the benefits of his hard toil in his garden. His garden won first prize in the Arawa Garden Competition. Congratulations Ernie and Val.
- Now for the football grand final! WE WAS ROBBED!
In all seriousness it was a great game. Despite defeat, our boys put up a commendable performance full of courage and determination. The game was much closer than the scores indicated, as late as five minutes to go, the decision could have gone either way. Congratulations to Mining. We will be back next year.
Best players. All played well, but special mention to Paul Anivoga, Friend Ane, Pennington Watabar, Eibe Marava, John Salevei, Peter Vanien and Ray Purdue.
Goalkickers: Peter Vanien, Spike Milligan 2, Paul Anivoga and Mathew Bene 1.
- A word of praise to our footy coach - Owen Keat. He really had the players at their peak for the final. A job well done. Owen received good support from Ray Purdue, Theo Macrides and Spike Milligan.
- Received good support from many people to raise some money for football trophies and refreshments for the wind-up. The money left over was placed in a draw at the wind-up. First prize went to ticket number one. Much heckling followed when it was learned that the holder of the ticket was the Assistant Mill Superintendent.

"FROTH N' BUBBLE"

COLUMN THREE

Notice all the birds getting around flashing maple pins? Mr Harry Horne is Commercial Councillor and Trade Commissioner for Canada residing in Sydney, and he recently visited site. It was his second trip here, having first visited in 1970, and he was interested to see the progress that has been made. Everyone he met was given a Canadian National Emblem - a maple pin.

It was a busy week for diplomats actually - also visiting was the New Zealand High Commissioner to Australia, Mr Yendall and his wife. They weren't handing out Kiwi pins, but some of the Kiwis on site were interested in talking to him.

And one of our guys visiting Melbourne - Severinus Ampaai - caught up with quite a few who used to work up here, and is shown in the picture chatting with Shan Rochfort in the foyer of 95 Collins St. His most memorable event was to witness Richmond thrash Melbourne at the M.C.G. He's grateful for being looked after so well while in the cold city and really enjoyed his luncheon with Mr Espie, Sir Maurice Mawby and Dr Gunther.



KIETA COUNCIL ELECTIONS

It appears that since the Concentrates article on the impending Kieta L.G.C. elections came out, only about 15 Panguna residents have bothered to enrol at the Administration Office. Enrollment is compulsory. Fines will be forthcoming to those who do not enroll.

When a person, who is not less than 18 years of age, has been resident for six months out of the preceeding twelve months in the Council area, he must, under law, enrol as an elector within one month of being entitled to do so. Section 87L of the Local Government Ordinance of Papua New Guinea provides a penalty of \$20 for failure to do so, and in addition a default penalty of \$1 per day whilst the offence continues.

JOHN'S GOING TO MADANG

John Wakaria, one of the company's translators and a "Concentrates" editor, is to attend a course in journalism at the Creative Training Centre in Madang. The six week course, starting mid-September, is operated by the United Church "Kristen Pres" in conjunction with Literacy Literature New Guinea.

INA'S AT THE OLYMPICS

Ina Park, former librarian with BCP, is spending her holidays at the Munich Olympics. Ina worked here from 1969 to 1971. She now works as a CRA librarian in Melbourne.

FIRST AID AND AMBULANCE SERVICES

From 7am, Monday, August 21 there is to be a re-organisation of the Company's medical, first aid and ambulance services.

At Panguna

1. The B.C.P.L. Medical Centre is open as indicated below.

Monday to Friday	7.30 am - 4.15 pm
Saturday	7.30 am - 10.30 am
Sunday	7.30 am - 10.30 am

(First Aid treatment and dressings only on Saturday and Sunday)

2. Medical advice and treatment is available to all Company employees at the B.C.P.L. Medical Centre at the times indicated above. However, employees requiring extensive or complicated treatment, or treatment for conditions causing absence from work for more than a few days, will be referred to the P.H.D. Panguna Medical Centre.

3. At all times when the B.C.P.L. Medical Centre is closed:-

- (a) First aid treatment will be provided by fire personnel trained in First Aid at an Ambulance Room located at the Fire Station.
- (b) Treatment beyond First Aid will be provided at the P.H.D. Panguna Medical Centre.

4. The B.C.P.L. ambulance service will be conducted by fire personnel 24 hours a day, 7 days a week. Calls for ambulance transport will be received by the Security Controller, as at present.

At Loloho

1. The First Aid Post is manned by a qualified Medical Assistant at the times indicated below.

Monday to Friday	7.30 am - 12.15 pm
	1.00 pm - 4.15 pm

2. Employees requiring consultation with a doctor or treatment for conditions requiring absence from work for more than a day or two will be referred to the Arawa Hospital.

3. The First Aid Post will remain open 24 hours a day, 7 days a week. When the Medical Assistant is not on duty first aid treatment will be provided by fire personnel trained in First Aid. Employees requiring treatment beyond First Aid will be referred to Arawa Hospital.

4. The B.C.P.L. ambulance service will be conducted by fire personnel 24 hours a day, 7 days a week.

WAKUNAI SHOW

Special flights are being arranged for the Wakunai Show. TAA are handling the Kieta/Wakunai leg and Ansett the Wakunai/Kieta leg. Free transport is arranged from the airstrip to the show and back.

If you go by boat the show arrangers ask you to moore at Kiviri, on the beach just south of the airstrip. The site offers drinking water, toilets and firewood. Mogas and outboard oil is obtainable at Numa Numa Plantation. Programme for September 11 is as follows: 7 am Judging (until 9.30 am), 8 am Childrens sports, 9 am Bike race heats, 9.30 am Milking competition, 10 am Grand Parade, 11 am Official Opening, 11.30 am Bike race final, 12 noon Singing, 1 pm Wood chop : greasy pole, 2 pm Greasy pole, 3 pm Greasy pig.

NEW CONSTRUCTION

Following the meeting of the Board of Directors of Bougainville Copper Pty. Limited in Panguna, during the week of 14th August, the Directors announced details of their continuing construction effort. This consisted of the completion of townsite amenities and other non-process facilities plus modifications and changes to process plant found to be desirable since commissioning of the plant in April.

Some of the non-process construction work is represented by the recent awarding of a contract to Barclay Brothers for construction of an olympic sized swimming pool at Panguna. Other contracts to be awarded shortly will include sealing of the Port Mine Access Road and construction of further married housing at Arawa.

Modifications to plant facilities include such items as changes in the fine crushing and screening plant and the addition of a ball mill in the grinding section to ensure adequate production to service sales contracts recently concluded.

ARAWA COUNTRY CLUB

The committee of the Arawa Country Club has decided that with effect from October 1, anyone who has been resident in Arawa, Panguna or Kieta for more than two months, and who wishes to become a member of the Arawa Country Club, will pay an entrance fee of \$50 in addition to the annual subscription of \$30. Members who were not at the A.C.M. are advised that their present subscription will be carried through to July 31, 1973.

LOSSES AT LOLOHO

A ladies gold watch has been found at the Loloho married quarters beach. Owner may claim it from John Picken, coast recreation officer, Loloho. A gold ring was also found recently at the same place. A date is engraved on it. Owner can ring Lyle Monk, 5-137.

HASH HOUSE HARRIERS

Turnout - 22 and 2 hares and Doddsy's dog. This run also brought in quite a few new faces to the Hash - John Eccles, Peter Robinson, Peter Finch and Richard Anderson who joined us the previous week. Welcome to the Hash and don't one of you b..... try to pike out on us!

From Pinei Bridge where the run began, the trail led us up the access road a ways and a brief hash halt was called in order to prepare the pack for the trail as it disappeared into the jungle. On on with Blue doing his brain on the Hash Horn until we crossed a small creek and ran along the side of it. Encountering a small village the pack proceeded through it with quiet footsteps until we passed it then the roar of "On On's" began again.

The trail led in the direction of the Port-Mine access road again and when we reached it, we found the trail leading downwards towards Camp 5. This stretch was a bit of a gut buster, and really sweated the p... out of Phil Hutton, but like all runs, the reward of an icy cold greenie is always at the end - well most times anyway. Doddsy also joined us for this run and the Hash welcome you Doddsy, but can't you keep your b..... mut out of the path of the traffic. He is a bit too fit for our liking and we were reluctant about sharing our greenies with him too.

Panguna

ORGANISATIONS:

Panguna Arts Society	Mr K. Ambrose	5-392
Lions Club	President Mr L. Smith	5-214
Parents & Citizens Assoc.	Mr R. Hope	5-290
Primary School Mothers Club	Mrs M. Blackwell	958176
Scout Group	Mr J. Bissaker	5-328
	Mr J. Cameron	5-258
Girl Guide Company	Mrs J. Bissaker	5-245
Brownie Pack	Mrs A. Embery	B65 T/S
Squash Club	President Mr K. Tregauer	5-256
	Mr M. Sullivan	5-297
Cricket Club	President Mr J. Trezise	5-317
	Secretary Mr J. Beauchamp	5-320

EMERGENCY DIRECTORY:

Security Emergency Control 958022.....123
(For all emergencies)

Medical BCP Medical Centre 958304.....254
Panguna Hospital 958289

Police Police Station 958222

BANK:

A branch of the Commonwealth Bank is situated approx. 150 yards west of the Trade Store and is open:

Monday to Friday	9.00 a.m. - 11.30 a.m. 1.30 p.m. - 3.00 p.m.
Friday only	4.30 p.m. - 6.00 p.m.
Saturday	8.30 a.m. - 11.00 a.m.

POST OFFICE is open:

Monday to Friday	8.30 a.m. - 12.00 p.m. 1.00 p.m. - 4.00 p.m.
Saturday	8.30 a.m. - 12.00 p.m.

LIBRARY is open:

Monday to Saturday	8.00 a.m. - 12.00 p.m. 2.00 p.m. - 5.00 p.m.
--------------------	---

TRADE STORE is open:

Monday to Friday	9.00 a.m. - 5.30 p.m.
Friday evening	6.30 p.m. - 8.30 p.m.
Saturday	9.00 a.m. - 12.00 p.m.

HOSPITAL

The P.H.D. Hospital, situated at Townsite, Panguna is staffed 24 hours per day, seven days a week.

Out-patients Monday to Friday	8.00 a.m. - 12.00 p.m. 1.00 p.m. - 4.00 p.m.
Saturday	8.00 a.m. - 12.00 p.m.

The BCP Medical Centre is open for treatments from 7.30 a.m. to 4.15 p.m. daily.

CHURCH SERVICES:

Catholic	Sunday 8.00 a.m. and 7.00 p.m. Every evening 7.00 p.m. Held in building opposite Kawerong Flats. Priest in charge - Father G. Fahey, P.O. Box 48, Panguna.
United Church	Sunday at 9.00 a.m. in the building opposite Kawerong Flats. Sunday 7.00 p.m. at Camp 10 Every Wednesday 7.30 p.m. (Townsite)

Please let us know any additions to organisations in Panguna and Arawa; or any changes in shopping, banking hours etc. Ring 5-255.

Arawa

ORGANISATIONS:

Lions Club	President	Mr R. Rudkin	5-161
	Secretary	Mr P. Searle	5-285
Country Club	President	Mr H. Roach	951002
		Mr G. Causon	5-327
BCP Womens' Club	President	Mrs M. Gomara	
	Secretary	Mrs T. Lue	

POLICE STATION:

is situated between the Tupukas River and the trade store and is open 24 hours per day. There is an emergency telephone at the police station (951222) which is on a direct line to Kieta Police Station (956222).

TRADE STORE is open:

Monday to Friday	8.30 a.m. - 5.30 p.m.
Friday evening	6.30 p.m. - 8.30 p.m.
Saturday	8.30 a.m. - 12.00 p.m.

BANK is open:

Monday to Friday	9.00 a.m. - 11.30 a.m. 1.30 p.m. - 3.00 p.m.
Saturday	8.30 a.m. - 11.00 a.m.

POST OFFICE is open:

Monday to Friday	8.00 a.m. - 12.00 p.m. 1.30 p.m. - 4.00 p.m.
Saturday	8.00 a.m. - 12.00 p.m.

LIBRARY in Room 6, Tupukas Primary School, is open:

Tuesday	10.00 a.m. - 12.00 p.m.
Wednesday	7.00 a.m. - 9.00 a.m.
Thursday	3.00 p.m. - 5.00 p.m.
Saturday	10.00 a.m. - 12.00 p.m.

CLINIC:

Morning Clinic

Monday	9.00 a.m. - 11.00 a.m.
Tuesday to Friday	8.30 a.m. - 11.00 a.m.

Afternoon Clinic

Monday to Friday	1.30 p.m. - 3.00 p.m.
------------------	-----------------------

Child Welfare Clinic

Monday to Friday	1.30 p.m. - 3.00 p.m.
------------------	-----------------------

CHEMIST:

Monday to Friday	8.00 a.m. - 1.00 p.m. 2.00 p.m. - 5.30 p.m.
Saturday	8.00 a.m. - 12.00 p.m.

DENTIST: Arawa 951424

Monday to Friday	8.00 a.m. - 12.00 p.m. 2.00 p.m. - 6.00 p.m.
Saturday	8.00 a.m. - 9.30 a.m.

PRIVATE DOCTOR: Dr P. Weber is open:

Monday, Tuesday, Thursday and Friday	9.00 a.m. - 11.00 a.m. 2.00 p.m. - 4.00 p.m.
Wednesday	2.00 p.m. - 4.00 p.m. 7.00 p.m. - 8.30 p.m.

CHURCH SERVICES:

Catholic:	Sundays 8.00 a.m. and 5.00 p.m. at Arawa Fermentary.
United Church:	Sunday 9.00 a.m. at the Fermentary.